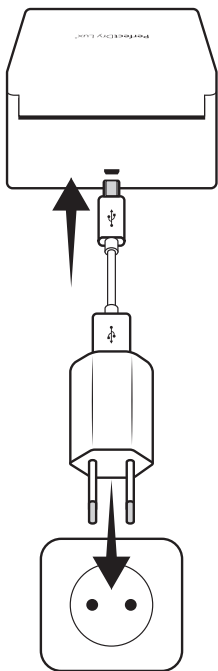


1

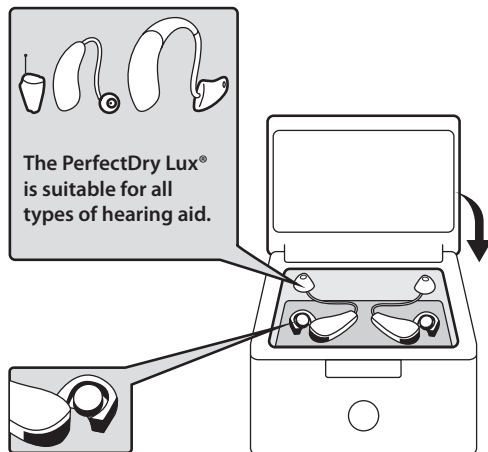
Connect the PerfectDry Lux®. The blue indicator lights to show that it is powered on.

If no actions occur for 30 seconds, the indicator turns off.



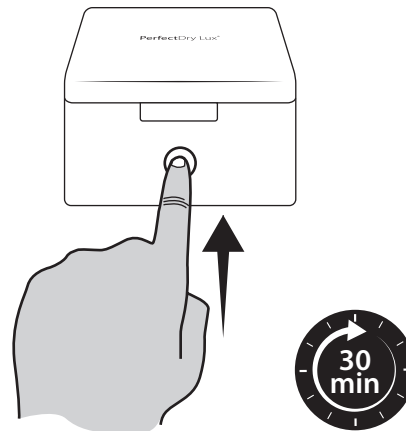
2

Clean your hearing aids using a specific cleansing wipe to eliminate excess impurities. Then open the battery compartments on your hearing aids (the batteries can be left inside the hearing aids during the cycle). Close the cover.



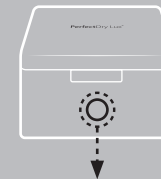
3

Press the touch button once to start the cycle. The blue indicator flashes slowly, indicating that the box is running. The cycle will only run if the cover is closed. The PerfectDry Lux® stops automatically at the end of the cleaning cycle (30 minutes). The indicator turns off.



Make sure the cover is closed when you start the cycle. Also make sure you do not open the box when it is running, if you do so the PerfectDry Lux® will stop in order to maintain safety.

Meaning of the light indicators



BLUE Flashing >

Running






BLUE On >

In standby mode

Identification data

This information can be found on the lower part of your PerfectDry Lux®.

Meaning of abbreviations:

- V** Volts (Power supply voltage)
- A** Ampere (Power consumption)
-  USB power supply symbol
-  Indoor use
-  The product is made from ABS with a recycling code of 7
-  This product is compliant with all applicable European directives.
-  **DISPOSAL**
Dispose of previous appliances ecologically.

Old appliances contain recyclable materials that can be recovered. Therefore, please dispose of your old appliances using the appropriate waste disposal service

PerfectDry Lux®

Function details

UV-C disinfectant

The PerfectDry Lux® has a short-wave UV-C lamp of which the 360° circular layout makes it possible to reach all the hearing aid surfaces.

The exposure of surfaces to UV-C light eliminates over 99% of fungi and bacteria and significantly reduces itching and infection of the ear canal.

Drying - Dehumidifying

The PerfectDry Lux® has a ventilator-driven pulsed air drying system. This means that the required power and drying time is reduced. The care chamber temperature is controlled by an electronic system in order to obtain a maximum temperature of 45°C whatever the room temperature, thereby preventing damage to the hearing aids being cleaned.

In order to maintain optimum hearing aid quality, the daily use of the PerfectDry Lux® is strongly recommended.

Applicable standards

This case meets the requirements of the standards and directives covering medical devices, especially the NF EN ISO 13485/2012 standard and directive 93/42/EEC of 14th June 1993 on medical devices.

Technical data

Functions

Internal (lxwxd): 70x21x51 mm
 External (lxwxd) : 93x48x76 mm
 Weight (g): 144g
 UV lamp: 253.7nm
 Max. power: 4W
 Standby power: 0.04w
 Software: 00 PDL-LOG-02.00
 Storage conditions from -20°C to +65°C
 Number of cycles: 1

Drying temperature: <45° C
 Cycle duration: 30 min.
 Ambient operating temperature:
 From 12°C to 40°C

Power Supply:
 Input: 100-240Vac 50-60Hz / Output: 5Vdc
 Connectors: USB cable - micro USB

Safety instructions

The PerfectDry Lux® must be used by persons in full possession of their mental capacities. However there are no applicable restrictions as to the user.

Keep out of the reach of children. Any work, other than cleaning and routine care by the client, must be carried out by the manufacturer's customer service or by an approved professional. Do not place the PerfectDry Lux®, the power supply cable or the plug in water or any other liquid. If the power supply cable or the plug are damaged, do not use the device and replace them immediately. Replace your mains adapter with an original model.

Place the PerfectDry Lux® on a flat, dry and stable surface. Do not directly look at the UV-C lamp located in the drying chamber. When disconnecting, pull the plug and not the cable.

Never use detergent or corrosive products to clean your PerfectDry Lux®. Failure to follow these instructions will void the guarantee. The manufacturer cannot be held liable for damage caused by incorrect use or handling.

Product care advice

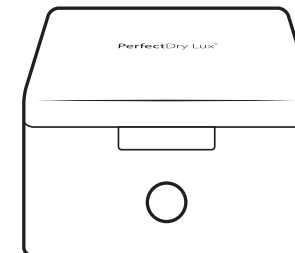
Clean using a soft cloth. Do not clean the PerfectDry Lux® using abrasive products. Do not spray liquids into the device. Keep the PerfectDry Lux® closed when not in use to avoid impurities from being deposited.

Guarantee

36 months - (cable and transformer included). In the event of a malfunction, contact your hearing-aid specialist. Proof of purchase will be requested for all work by the customer service during the guarantee period. This guarantee does not apply to defects caused by an accident or incident or similar damage, by introducing a liquid, negligence, unsuitable use, dismantling of any kind, lack of care or any other circumstance caused by the user. Furthermore, this guarantee will not apply to damage caused by lightning or any other electric voltage variation. As a precaution, please disconnect the PerfectDry Lux® in the event of a thunderstorm.

User instructions

PerfectDry Lux®



UV-C disinfection and
 fast dehumidification
 or hearing aids

This pack contains:

- 1 PerfectDry Lux®
- 1 USB cable
- 1 mains adapter
- 1 User manual